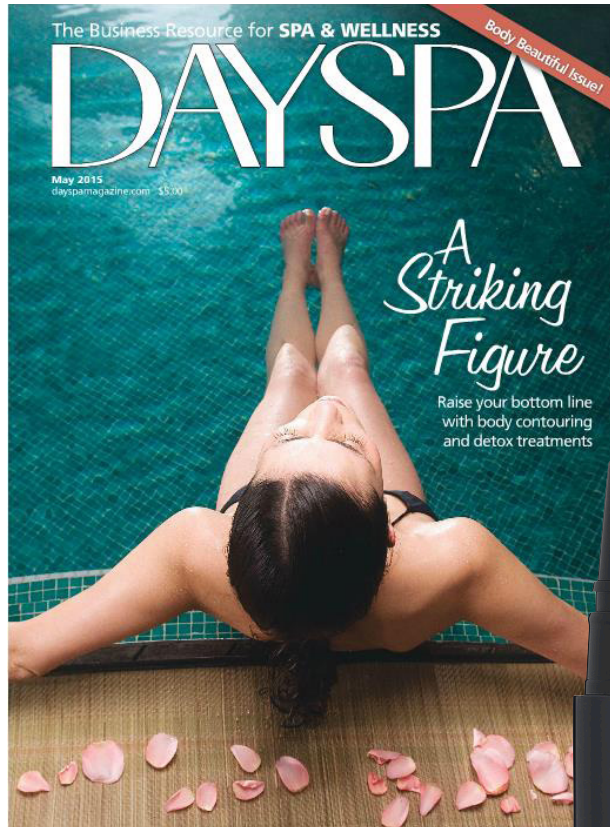


glō·minerals

AS SEEN IN



PRODUCT ESSENTIALS



- 25. Malibu C's Exfoliant Facial scrub, made of oat seed flour, finely crushed almond meal and jojoba beads, is ideal for targeting acne-prone and oily skin. **800.622.7332, malbur.com**
- 26. Elna Organics' Omega "O" Serum Perfect for post-exfoliation, this regenerating serum packs wild card collagen and wild salmon oil. **877.384.8300, elnaorganics.com**
- 27. The Model 900 Microcurrent Machine by Beautiful Image features broad-range, frequency-specific microcurrent that delivers customized intensity without muscle contraction or over-stimulation of all levels. **800.800.0838, beautifulimagefl.com**
- 28. Glō Minerals' Luxe Liquid Bright Concealer, in a lightweight corrective pen, brings brightness to the complexion. **800.232.0398, glōprofessional.com**
- 29. Biotone's Muscle & Joint Therapeutic Massage Gel is infused with essential oils to help address sore joints and aching muscles. **800.445.6457, biotone.com**
- 30. Help clients wash away a frazzled day using the Stress-Fix Creme Cleansing Oil from Aveda, infused with a soothing aroma that blends organic babassu and sunflower oils to cleanse, moisturize and relax. **800.644.4831, aveda.com**
- 31. Buff guests' skin with salt and sugar in Elemental Herbology's Macadamia & Papaya Radiance Body Scrub, which also boasts strawberry, Kombu, kaka, macadamia and burnt oil. **800.937.4372, elementherbology.com**
- 32. Argan plant stem cells, Te-Retinal and Natrikyl synthé 6 peptide combine in Naturopathica's Argan & Retinol Wrinkle Repair Night Cream to reduce the appearance of lines and wrinkles. **800.669.7618, naturopathica.com**



« Luxe Liquid Bright Concealer "glō mineral's Luxe Liquid Bright Concealer, in a lightweight corrective pen, brings brightness to the complexion.»