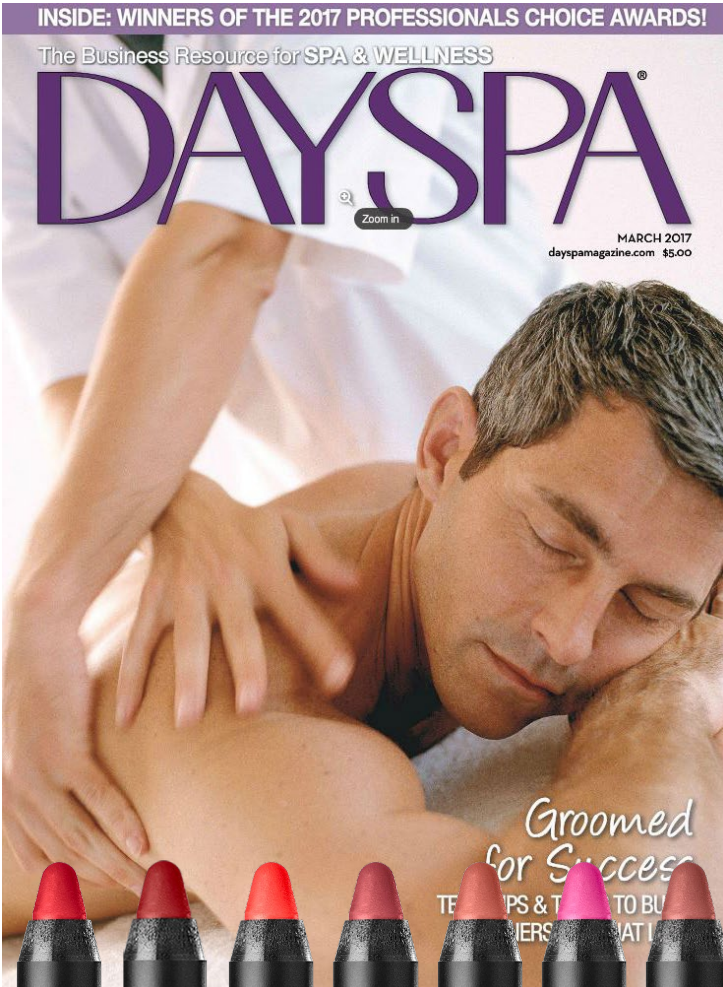


DAY SPA MAGAZINE



dayspa 2017 professionals choice awards

MAKEUP



REMOVER

- ▶ **Eminence Herbal Eye Make-up Remover** | eminenceorganics.com
- ▶ **Jane Iredale Magic Mitt** | janeiredale.com
- ▶ **Sormé Clean & Gentle Oil-Free Eye Makeup Remover** | sorme.com



LASH EXTENSIONS

- ▶ **Bella Lash Royal Lashes** | bellalash.com
- ▶ **Novalash American Volume Lash Extensions** | novalash.com
- ▶ **Xtreme Lash Faux Mink X-Wrap Lash Tray** | xtremelashes.com



LASH/BROW SERUM/CONDITIONER

- ▶ **BrowFood Phyto-Medic Brow Enhancer** | lashfood.com
- ▶ **Grande Cosmetics GrandeLASH-MD** | grandecosmetics.com
- ▶ **RapidLash Eyelash Enhancing Serum** | rapidlash.com
- ▶ **Revitalash Advanced** | revitalash.com



FACE

- ▶ **Advanced Mineral Makeup Liquid Foundation** | advancedmineralmakeup.com
- ▶ **Jane Iredale PurePressed Base Mineral Foundation** | janeiredale.com
- ▶ **Lady Burd Exclusive Private Label Cosmetics Tanning Powder** | ladyburd.com
- ▶ **Mineral Mine Pressed Mineral Foundation** | mineralmine.com

LIPS

- ▶ **glo Minerals Suede Matte Crayon** | glominerals.com
- ▶ **Jane Iredale PureGloss Lip Gloss** | janeiredale.com
- ▶ **Repêchage Perfect Skin Condition Lip Gloss** | repêchage.com
- ▶ **Sormé Nonetop Moisturizing Matte Liquid Lipstick** | sorme.com



SUEDE MATTE CRAYON

Dayspa 2017 Professionals Choice Award Winner

Category: Lips

